

YEAR

2013

LINK CHATHAM RD N & MA TAU WAI RD (from SAN LAU ST
to CHI KIANG ST)

COVERAGE (B) STATION

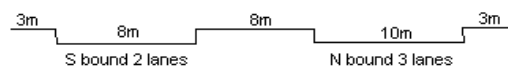
4212

ROAD NETWORK

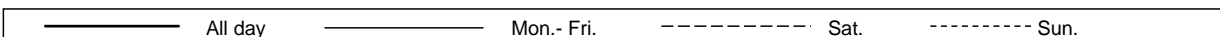
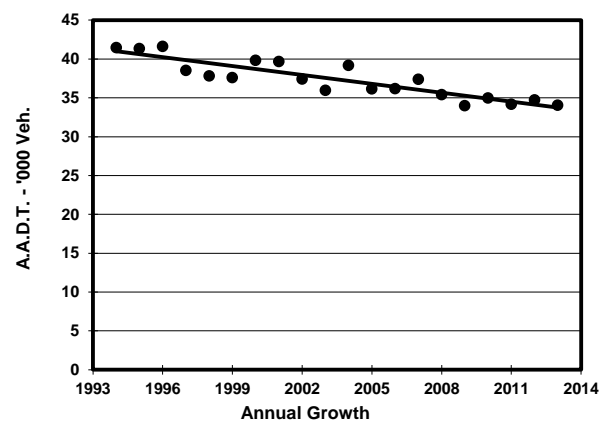
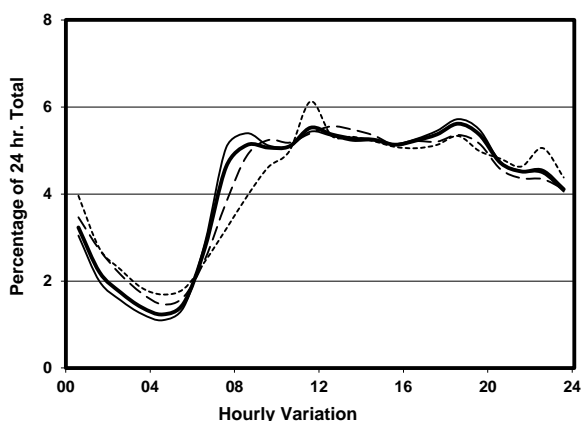
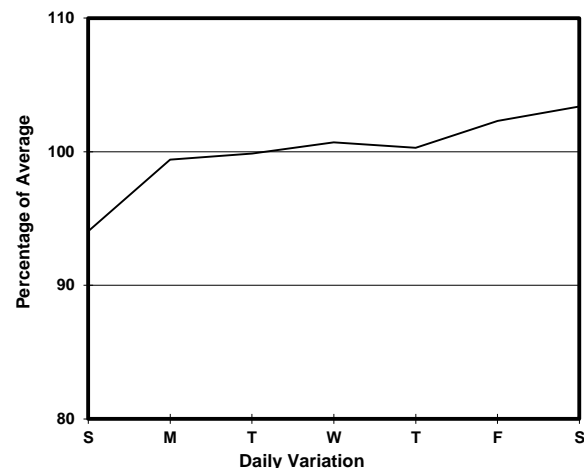
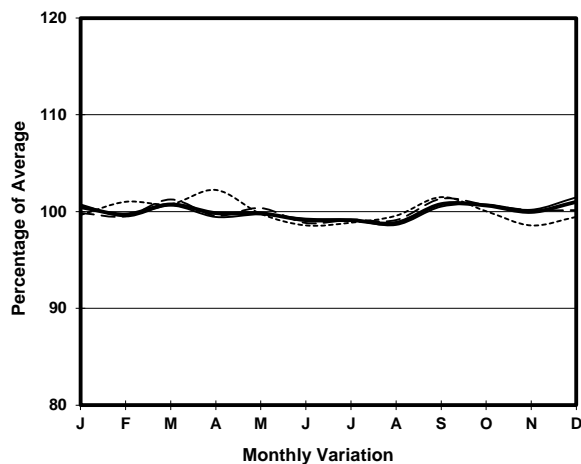
MAJOR

ROAD TYPE

PRIMARY DISTRIBUTOR



1. TRAFFIC FLOW VARIATION AND GROWTH



2. TRAFFIC CHARACTERISTICS (BY DIRECTION)

| Parameter | All - Day | Mon. - Fri. | Sat. | Sun. |
|--------------------------------------|-----------|-------------|-----------|-----------|
| SOUTH BOUND | | | | |
| A.A.D.T. | 14350 | 14130 | 15420 | 14680 |
| R 12 / 24 - % | 60.1 | 60.5 | 58.9 | 59.8 |
| R 16 / 24 - % | 79.5 | 80.2 | 77.7 | 78.3 |
| AM Peak Hour | 0800-0900 | 0700-0800 | 0900-1000 | 0900-1000 |
| One-way flow at AM peak hour | 740 | 830 | 850 | 710 |
| T - % (AM) | - | 18.3 | - | - |
| PM Peak Hour | 1800-1900 | 1800-1900 | 1800-1900 | 1800-1900 |
| One-way flow at PM peak hour | 740 | 720 | 770 | 810 |
| T - % (PM) | - | 16.4 | - | - |
| Prop.of commercial vehicles - 16 hr. | - | 17.5 | - | - |
| NORTH BOUND | | | | |
| A.A.D.T. | 19710 | 20210 | 19890 | 17480 |
| R 12 / 24 - % | 64.5 | 65.6 | 64 | 59 |
| R 16 / 24 - % | 83.5 | 84.5 | 82.2 | 79.3 |
| AM Peak Hour | 0900-1000 | 0800-0900 | 0900-1000 | 0900-1000 |
| One-way flow at AM peak hour | 1020 | 1080 | 1010 | 770 |
| T - % (AM) | - | 18.3 | - | - |
| PM Peak Hour | 1800-1900 | 1800-1900 | 1600-1700 | 1800-1900 |
| One-way flow at PM peak hour | 1170 | 1240 | 1140 | 900 |
| T - % (PM) | - | 16.5 | - | - |
| Prop.of commercial vehicles - 16 hr. | - | 18 | - | - |

3. OTHER INFORMATION AND COMMENT

Coverage (B) Station 4212
Year 2013

4. Vehicle classification and occupancy - Monday to Friday

| Time | | Class of vehicle | | | | | | | | | |
|------------------------|-----|------------------|---------|------|---------|------|------------|-------|---------|---------|------|
| | | Motor | Private | Taxi | Private | PLB | Goods veh. | | Non | Fr. Bus | |
| | | Cycle | Car | | LB | | Light | M & H | Fr. Bus | SD | DD |
| 0700-0800 | Pro | 6.4 | 17.4 | 25.8 | 3.5 | 13.6 | 12.2 | 2.6 | 4.6 | 0.0 | 13.9 |
| | Ocp | 1.2 | 1.5 | 1.9 | 7.8 | 11.9 | 1.6 | 1.4 | 22.0 | 0.0 | 40.9 |
| 0800-0900 | Pro | 4.7 | 28.2 | 18.4 | 0.9 | 13.4 | 12.5 | 3.4 | 5.8 | 0.0 | 12.7 |
| | Ocp | 1.1 | 1.4 | 2.0 | 4.3 | 10.2 | 1.6 | 1.5 | 19.6 | 0.0 | 42.1 |
| 0900-1000 | Pro | 4.3 | 23.1 | 19.3 | 1.3 | 13.0 | 18.6 | 3.3 | 3.3 | 0.0 | 13.9 |
| | Ocp | 1.0 | 1.5 | 1.9 | 2.0 | 7.1 | 1.7 | 1.6 | 16.9 | 0.0 | 22.5 |
| 1000-1100 | Pro | 2.1 | 22.4 | 30.9 | 0.0 | 5.9 | 19.0 | 4.8 | 2.9 | 0.0 | 12.0 |
| | Ocp | 1.0 | 1.3 | 1.8 | 0.0 | 6.0 | 1.7 | 1.4 | 14.5 | 0.0 | 20.7 |
| 1100-1200 | Pro | 1.1 | 24.8 | 24.6 | 1.5 | 6.5 | 23.3 | 6.7 | 2.4 | 0.0 | 9.1 |
| | Ocp | 1.0 | 1.5 | 1.7 | 1.9 | 8.0 | 1.5 | 1.6 | 24.0 | 0.0 | 22.4 |
| 1200-1300 | Pro | 4.0 | 26.7 | 26.0 | 0.7 | 5.7 | 20.0 | 2.6 | 4.4 | 0.0 | 9.9 |
| | Ocp | 1.2 | 1.5 | 1.8 | 4.3 | 7.8 | 1.8 | 1.5 | 17.0 | 0.0 | 20.8 |
| 1300-1400 | Pro | 2.1 | 24.4 | 23.1 | 2.1 | 6.1 | 22.3 | 4.3 | 3.2 | 0.0 | 12.4 |
| | Ocp | 1.1 | 1.4 | 2.0 | 2.1 | 7.6 | 1.4 | 1.4 | 19.8 | 0.0 | 20.0 |
| 1400-1500 | Pro | 4.0 | 28.6 | 22.5 | 0.8 | 3.6 | 23.6 | 4.2 | 3.6 | 0.0 | 9.1 |
| | Ocp | 1.0 | 1.5 | 2.0 | 1.8 | 8.8 | 1.5 | 1.5 | 12.7 | 0.0 | 20.7 |
| 1500-1600 | Pro | 5.0 | 28.8 | 20.5 | 1.8 | 4.3 | 20.8 | 2.0 | 4.8 | 0.0 | 12.1 |
| | Ocp | 1.0 | 1.4 | 2.0 | 4.6 | 10.7 | 1.5 | 1.5 | 15.9 | 0.0 | 24.3 |
| 1600-1700 | Pro | 3.2 | 33.0 | 20.1 | 1.0 | 6.6 | 17.4 | 2.9 | 3.4 | 0.0 | 12.4 |
| | Ocp | 1.1 | 1.6 | 1.8 | 2.8 | 7.2 | 1.6 | 1.4 | 21.2 | 0.0 | 30.0 |
| 1700-1800 | Pro | 7.3 | 21.3 | 24.1 | 1.3 | 10.6 | 16.7 | 2.3 | 4.1 | 0.0 | 12.4 |
| | Ocp | 1.1 | 1.4 | 2.0 | 5.0 | 10.8 | 1.7 | 1.9 | 27.4 | 0.0 | 38.8 |
| 1800-1900 Peak hour | Pro | 4.5 | 36.4 | 19.7 | 0.4 | 13.1 | 9.3 | 1.1 | 4.2 | 0.0 | 11.2 |
| | Ocp | 1.1 | 1.5 | 2.2 | 1.5 | 11.4 | 1.5 | 1.6 | 26.8 | 0.0 | 54.1 |
| 1900-2000 | Pro | 5.0 | 34.3 | 27.8 | 0.9 | 8.7 | 9.3 | 0.9 | 2.6 | 0.0 | 10.6 |
| | Ocp | 1.1 | 1.5 | 2.2 | 2.0 | 11.9 | 1.5 | 2.0 | 19.6 | 0.0 | 45.3 |
| 2000-2100 | Pro | 4.2 | 30.0 | 32.6 | 0.5 | 10.7 | 7.3 | 0.8 | 2.6 | 0.0 | 11.4 |
| | Ocp | 1.2 | 1.7 | 1.9 | 2.5 | 9.8 | 1.6 | 1.7 | 7.7 | 0.0 | 33.1 |
| 2100-2200 | Pro | 6.2 | 23.7 | 36.6 | 0.0 | 11.0 | 8.3 | 0.3 | 2.4 | 0.0 | 11.6 |
| | Ocp | 1.2 | 1.6 | 1.9 | 0.0 | 10.9 | 1.5 | 1.0 | 3.2 | 0.0 | 30.7 |
| 2200-2300 | Pro | 3.5 | 29.3 | 38.2 | 0.0 | 11.2 | 3.8 | 0.3 | 0.6 | 0.0 | 13.1 |
| | Ocp | 1.2 | 1.8 | 2.0 | 0.0 | 9.6 | 1.5 | 1.0 | 1.0 | 0.0 | 30.1 |
| 16 hours | Pro | 4.2 | 27.3 | 25.3 | 1.0 | 8.9 | 15.5 | 2.7 | 3.5 | 0.0 | 11.6 |
| | Ocp | 1.1 | 1.5 | 1.9 | 3.8 | 9.7 | 1.6 | 1.5 | 18.5 | 0.0 | 31.4 |

Legend

Pro. Proportion of vehicles in % (Sum may not add up to 100% due to figure rounding)
Ocp. Average occupancy of vehicles
M&H Medium and Heavy